

# Closing Remarks

Flemming Ornskov, M.D., MPH, Chief Executive Officer



# Shire is creating a unique leadership platform

## The leading rare disease-focused biotech

Sharp focus leads to high impact



**Focused patient communities**

*Rare diseases  
Highly specialized conditions*

Precision innovation and technologies

Culture of collaboration and execution

Global resource and expertise

**High patient impact**

Breakthrough therapies for patients with significant unmet needs

**High societal value**

Improved patient outcomes and value for customers

**Sustained growth**

Sustainable rare disease market serving multiple patient communities with high unmet need

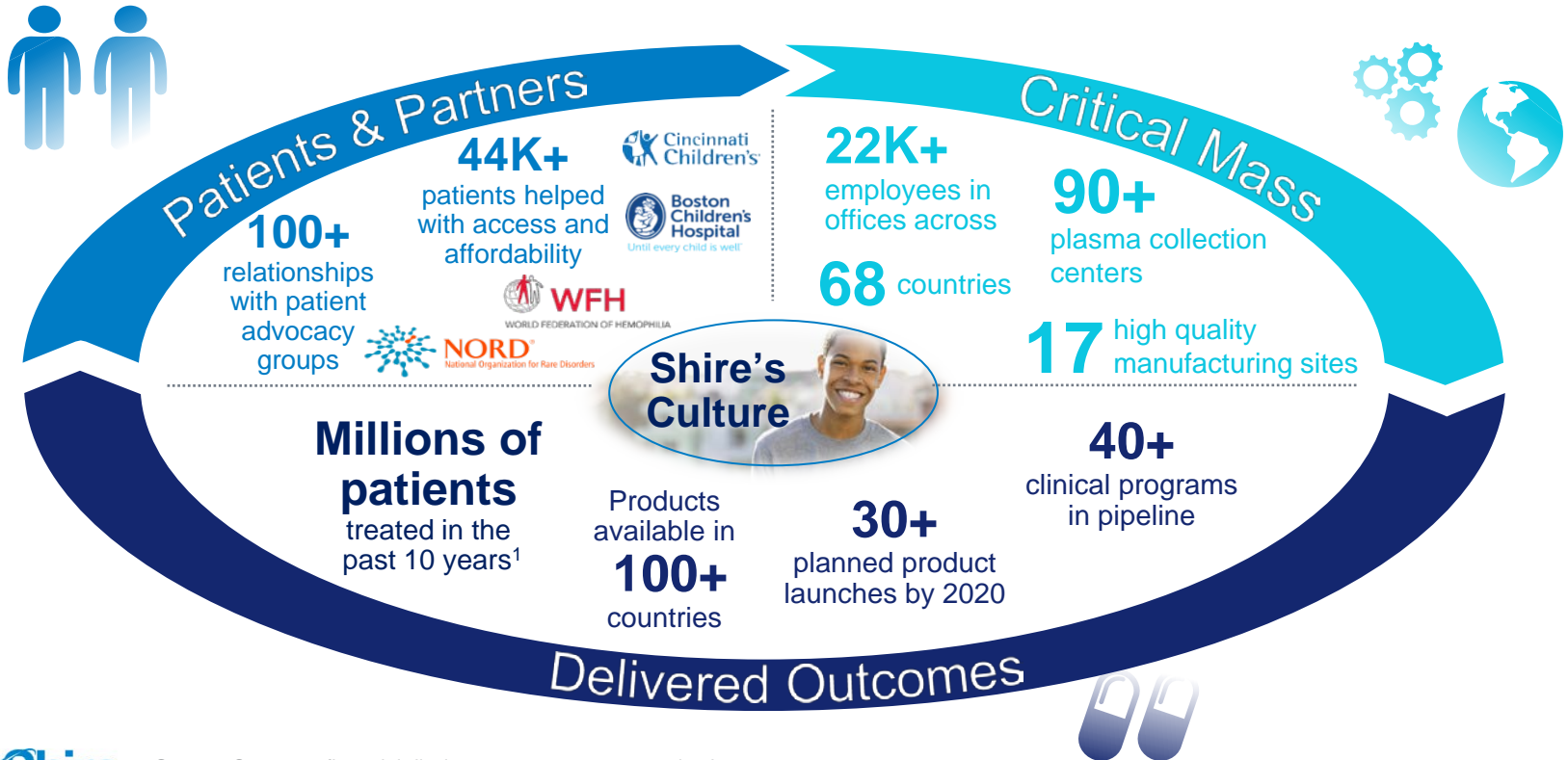
# Shire builds therapeutic strategies with first in class, best in class and differentiated products

*Serial innovation*

Order of Shire entry

Neuroscience (ADHD)	Adderall → Adderall XR → Vyvanse → Intuniv → SHP465*
GI	Pentasa → Lialda → Gattex → SHP647* (IBD) → SHP 621 (EoE) → SHP626* (NASH)
Genetic Diseases (LSDs)	Replagal → Vpriv → Elaprase → SHP609* (Hunter IT)
HAE	Firazyr → Cinryze → SHP643*
Ophthalmology	Xiidra → SHP640* (Conjunctivitis) → Preclinical program for adRP
Endocrinology	Plenadren → Natpara
Immunology	Gammagard / Kiovig → low IgA → HyQvia → Cuvitru
Hematology	Advate → Adynovate → Vonvendi → SHP656* (Hem A, BAX826) → Gene Therapy*
Oncology	Oncaspar → Calaspargase Pegol*

# ...and leverages our partnerships with patients and healthcare providers to bring our medicines to a global audience



Source: Company financial disclosures, management projections  
<sup>(1)</sup> IMS Health, management estimates, data since 2006

# Six new programs highlighted today demonstrate the breadth and depth of innovation at Shire

## **SHP621\***

(eosinophilic esophagitis)

*Breakthrough therapy*

*Orphan drug (US)*

## **SHP647\***

(inflammatory bowel disease)

## **SHP607\***

(complications of prematurity)

*Fast track designation*

*Orphan drug (US & EU)*

## **SHP620\* (maribavir)**

(CMV infection)

*Orphan drug (US & EU)*

## **SHP465\***

(attention-deficit /  
hyperactivity disorder)

## **SHP643\* (lanadelumab)**

(hereditary angioedema)

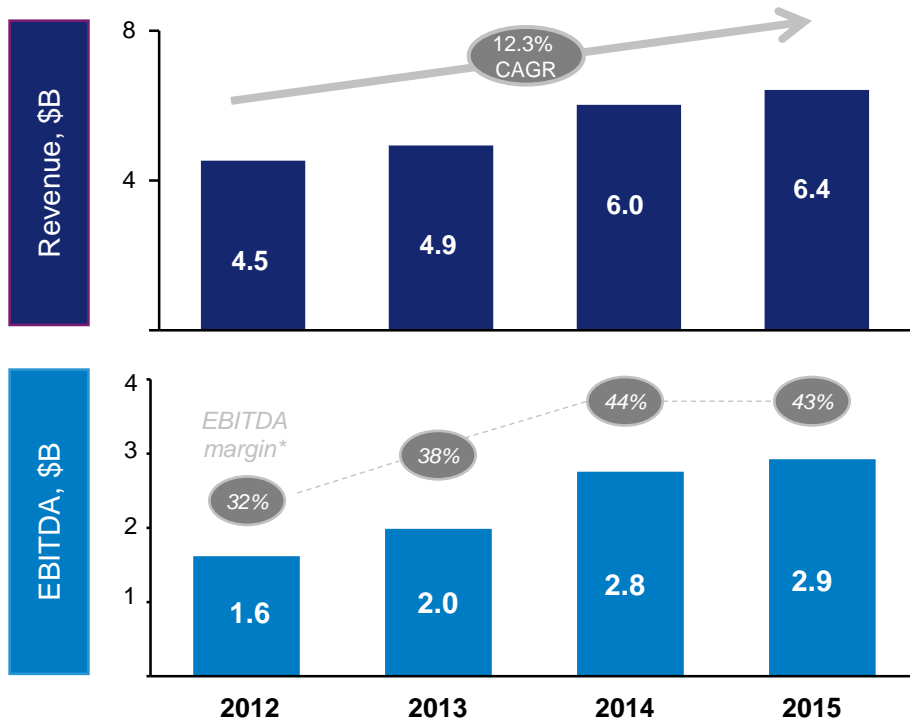
*Breakthrough therapy*

*Fast track designation*

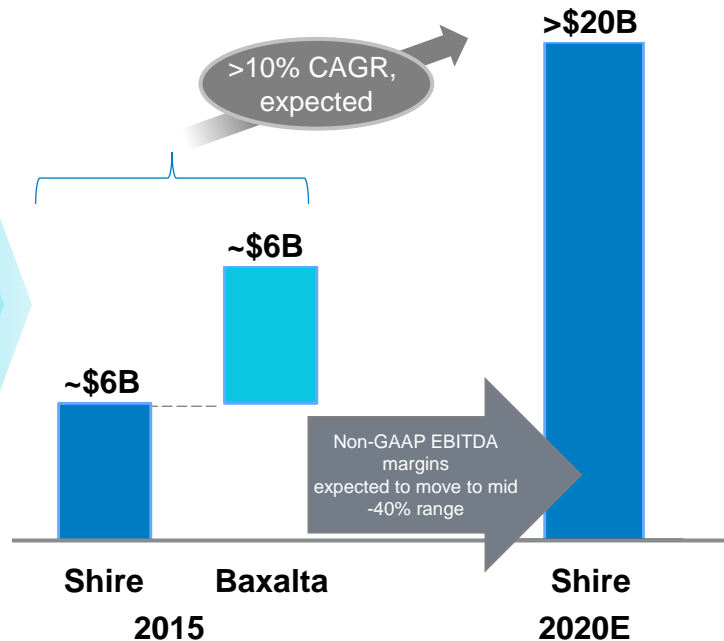
*Orphan drug (US & EU)*

# Delivered consistent historical revenue and profitability growth, with the right strategy for continuing this trend

## Strong growth over the last several years



## Addition of Baxalta expected to fuel continued revenue growth toward our stated "20 x 20" goal



Net debt / EBITDA anticipated to reach 2-3X by end of 2017

Source: Company financial disclosures, management projections  
 \* Non GAAP EBITDA as a % of product sales, excluding royalties and other revenues